

Current Results

Written by Administrator

Friday, 30 July 2010 00:00 - Last Updated Friday, 30 July 2010 08:20

LINQ Implementation Scorecard:

LINQ Implementation										
Test suite	Minimum	Maximum	Avg	StdDev	LINQ to SQL	In tools	Data Objects Net	Linq2Csv	References	Unit
LINQ Implementation										
Aggregates	0	5	n/a	0	0	1	0	1	5	n/a
Join/Contains	0	5	n/a	0	1	1	0	1	4.5	n/a
Complex	0	5	n/a	0	0	5	0	2	5	n/a
Element operations	0	5	n/a	0	5	0	0	0	5	n/a
Filtering	0	10	n/a	4.2	2.2	0	0	0	6.1	n/a
Grouping	0	10	n/a	1	1	3	0	2	10.2	n/a
Join	0	5	n/a	0	0	0	0	1	4	n/a
Ordering	0	5	n/a	2.1	2	0	0	2	5	n/a
Projections	0	10	n/a	1	2.1	0	0	1	6.1	n/a
References	0	5	n/a	0	5	0	0	1	5	n/a
Set operations	0	5	n/a	0	0	0	0	1	6.1	n/a
Standard functions	0	10	n/a	1.1	1.1	0	2	1.1	20	n/a
Take/Skip	0	5	n/a	1	0	1	0	0	2.1	n/a
Type casts	0	5	n/a	1	1	0	0	1	4	n/a
LINQ Implementation total:										
Performed	0	121	n/a	121	121	121	121	121	121	n/a
Passed	0	121	n/a	96	108	101	119	106	95	n/a
Failed	0	121	n/a	25	13	19	2	15	26	n/a
Property	0	121	n/a	21	10	10	2	14	27	n/a
Asserted	0	121	n/a	4	1	1	0	1	9	n/a
Score	0	100	n/a	79.3	89.3	84.3	88.8	87.8	77.7	n/a
Color bar										
Worst result										
Best result										
Units:										
n/a	total count of failed tests (# count of tests failed with assertion less is better (0 is ideal))									
#	count									
%	percentage (% of passed tests, less is better)									

Remarks

- **Color bar:** Green cells indicate better results; Red cells indicate worse results (the most "red" value is explicitly defined in Landmark column); Yellow cells indicate average results. Color bar is continuous , so all the intermediate colors can be used.

- **LINQ in SubSonic is not tested** - currently it is impossible to do this on our standard tests and model, because it does not support references.

Performance scorecard:

1000 Item sequence										
Test suite	Minimum	Maximum	Avg	StdDev	LINQ to SQL	In tools	Data Objects Net	Linq2Csv	References	Unit
CRUD Performance:										
Fetch	0	20 808	5 316	8 851	8 056	12 007	6 070	5 493	8 332	op/s
Single Operation:										
Create Instance	0	17 048	3 619	3 409	13 047	6 737	8 478	3 599	8 958	op/s
Update Instance	0	26 788	5 128	2 723	10 730	9 770	10 400	5 051	3 788	op/s
Remove Instance	0	17 646	4 781	1 950	11 193	9 144	11 130	1 149	9 870	op/s
CUO Average	0	17 142	4 105	2 161	10 966	8 056	9 893	1 146	8 972	op/s
Multiple Operations:										
Create Instance	0	39 342	5 383	5 120	19 086	14 929	14 443	3 731	op/s	
Update Instance	0	41 142	6 571	2 360	21 465	24 876	17 729	3 786	op/s	
Remove Instance	0	25 463	7 026	2 244	25 306	27 844	24 660	3 982	op/s	
CUO Average	0	33 750	6 246	2 448	21 519	19 968	16 421	3 738	op/s	
Data Access Performance:										
Query:										
LINQ Query	0	n/a	563	743	8 064	1 414	2 980	1 008	3 286	queries/s
Compiled LINQ Query	0	n/a	6 536	9 575	12 501	9 023	9 732	n/a	3 383	queries/s
Native Query	0	18 817	8 758	n/a	13 316	10 886	n/a	3 346	6 174	queries/s
Paging (LINQ only):										
Get Small Page (10 items)	0	n/a	4 600	7 779	10 608	6 769	6 912	7 007	224	pages/s
Get Average Page (50 items)	0	n/a	3 705	7 050	9 174	5 246	5 290	6 311	2 805	pages/s
Get Large Page (100 items)	0	n/a	2 346	5 973	6 998	3 138	3 151	4 996	2 235	pages/s
Get Huge Page (1000 items)	0	n/a	1 467	3 930	4 538	1 325	1 190	325	1 671	pages/s
Materialization:										
LINQ Materialize	0	n/a	475 502	455 897	558 608	215 973	208 281	37 805	568 046	objects/s
Native Materialize	0	1 186 661	201 328	n/a	188 651	281 056	n/a	49 879	344 317	objects/s
File sizes (in bytes):										
Runtime libraries (dlls)	n/a	n/a	n/a	1 584 128	4 345 856	911 872	2 481 844	4 755 968	285 184	bytes
Color bar										
Worst result										
Best result										
Units:										
op/s										
queries/s										
pages/s										
objects/s										

Current Results

Written by Administrator

Friday, 30 July 2010 00:00 - Last Updated Friday, 30 July 2010 08:20

Remarks

- **Color bar:** Green cells indicate better results; Red cells indicate worse results (the most "red" value is explicitly defined in Landmark column);

Yellow

cells indicate average results.

Color bar is continuous

, so all the intermediate colors can be used.

- **Above results are produced for 1000 item sequence.** If you're interested in all the numbers, see [complete](#)

[ORMBattle.NET Test Suite output \(for 50, 100, 1K, 5K, 10K and 30K item sequences\)](#)

.

- **Cells with dashed frames** indicate results produced either with [exception to specialized API usage rule](#) (CUD

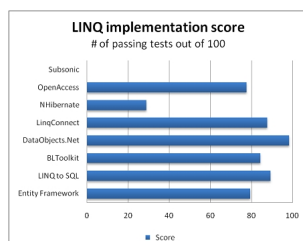
Multiple tests for BLToolkit and NHibernate), or results that are copied from nearby cells because of absence of API required by this test::

- *Absence of native query materialization in LINQ to SQL.* Or, better to say, LINQ is native API there. Thus results in these cells are copies of LINQ test results.

- *Absence of compiled LINQ queries in NHibernate and SubSonic.* Results there are copied from regular LINQ query tests.

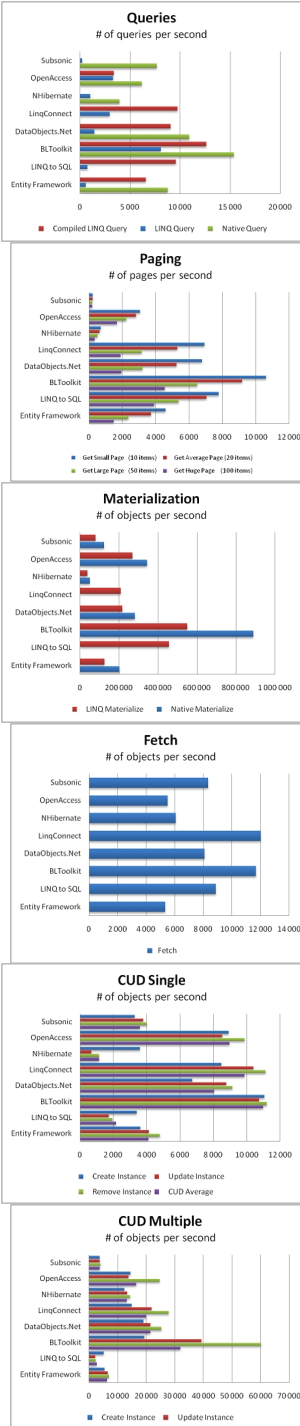
-

Charts



Current Results

Written by Administrator
Friday, 30 July 2010 00:00 - Last Updated Friday, 30 July 2010 08:20



Archived results 2009